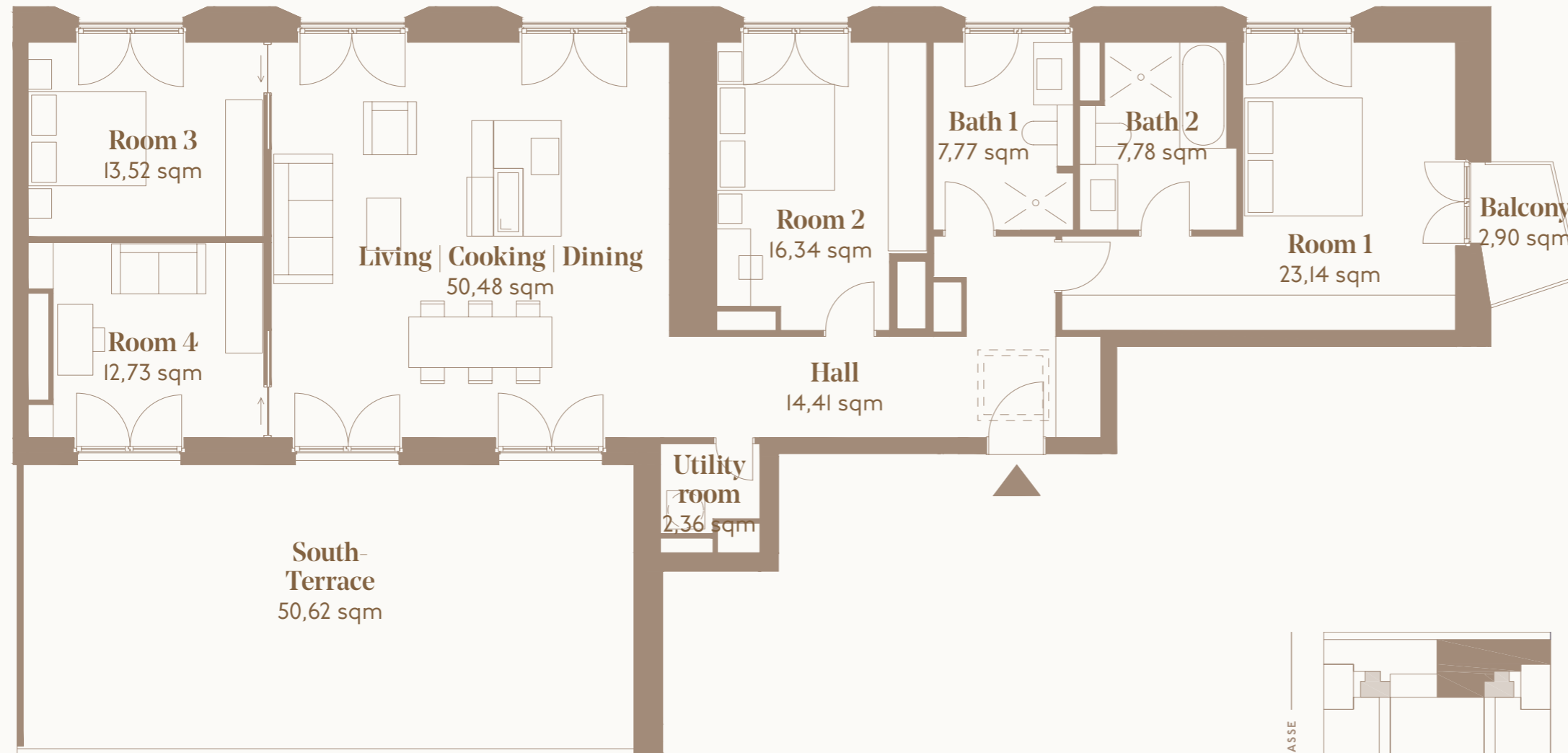


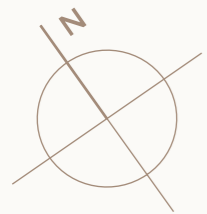
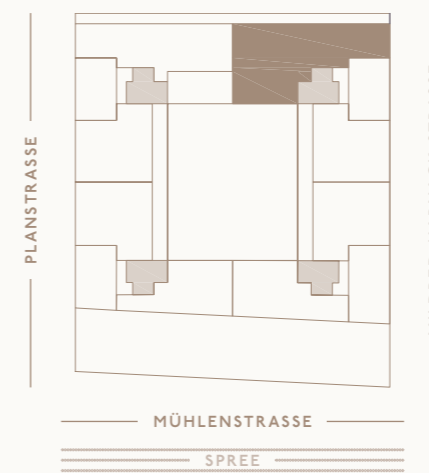
5-BEDROOM-PENTHOUSE



# Apartment 201

7<sup>TH</sup> FLOOR

Living   Cooking   Dining	50,48 sqm
Room 1	23,14 sqm
Room 2	16,34 sqm
Room 3	13,52 sqm
Room 4	12,73 sqm
Hall	14,41 sqm
Utility room	2,36 sqm
Bath 1	7,77 sqm
Bath 2	7,78 sqm
<b>Total living space</b>	<b>148,53 sqm</b>
Balcony	2,90 sqm
South-Terrace	50,62 sqm
<b>Total open space</b>	<b>53,52 sqm</b>
<b>Total area*</b>	<b>202,05 sqm</b>



\* The total area was Open spaces set at 100%.